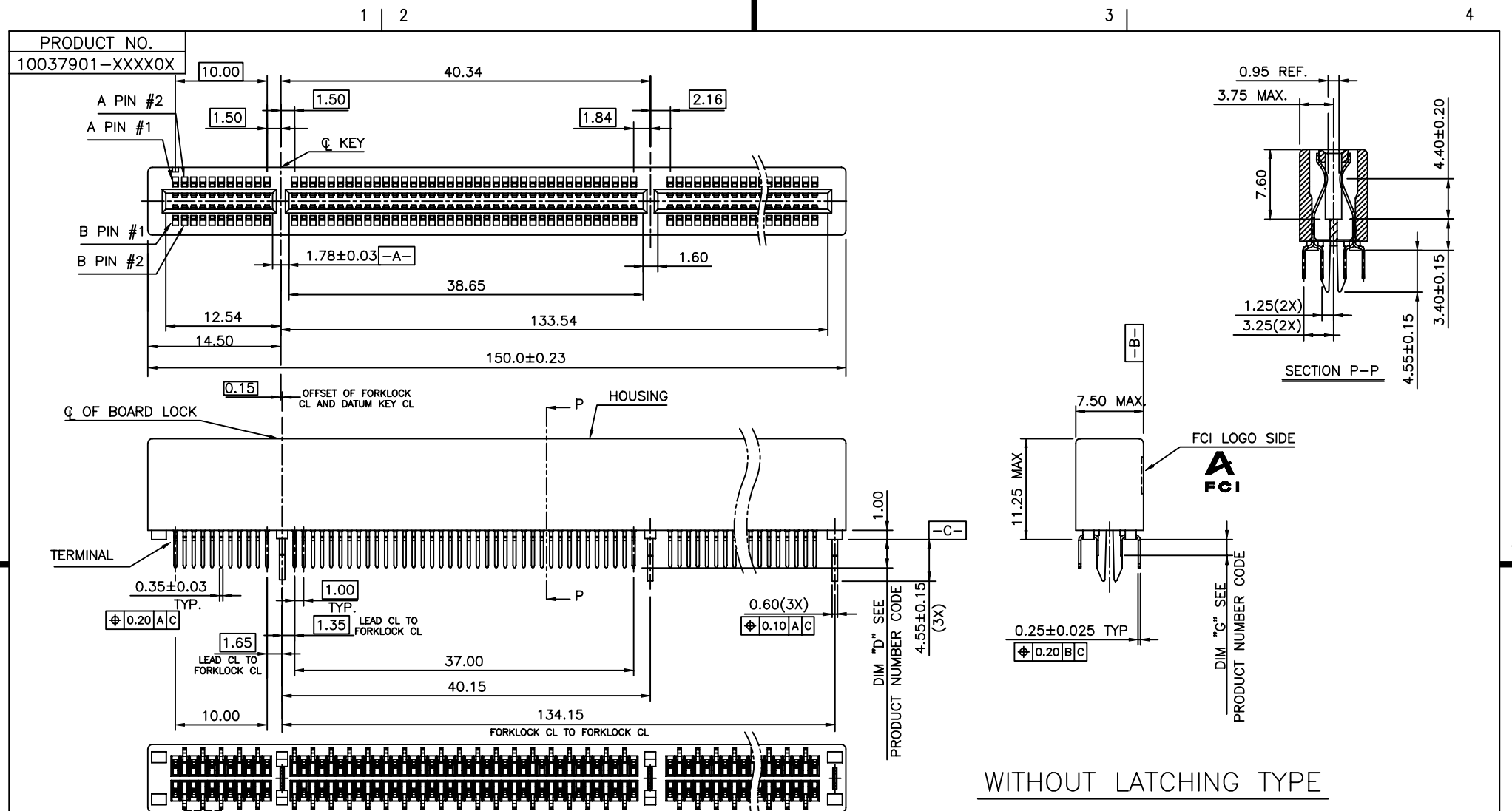


Tous droits strictement reserves. Reproduction ou communication a des tiers interdite sous quelque forme que ce soit sans autorisation ecrite du proprietaire. Propriete de c FCI. Droits de reproduction FCI.

All rights strictly reserved. Reproduction or issue to third parties in any form whatever is not permitted without written authority from the proprietor. Property of FCI. Copyright FCI.

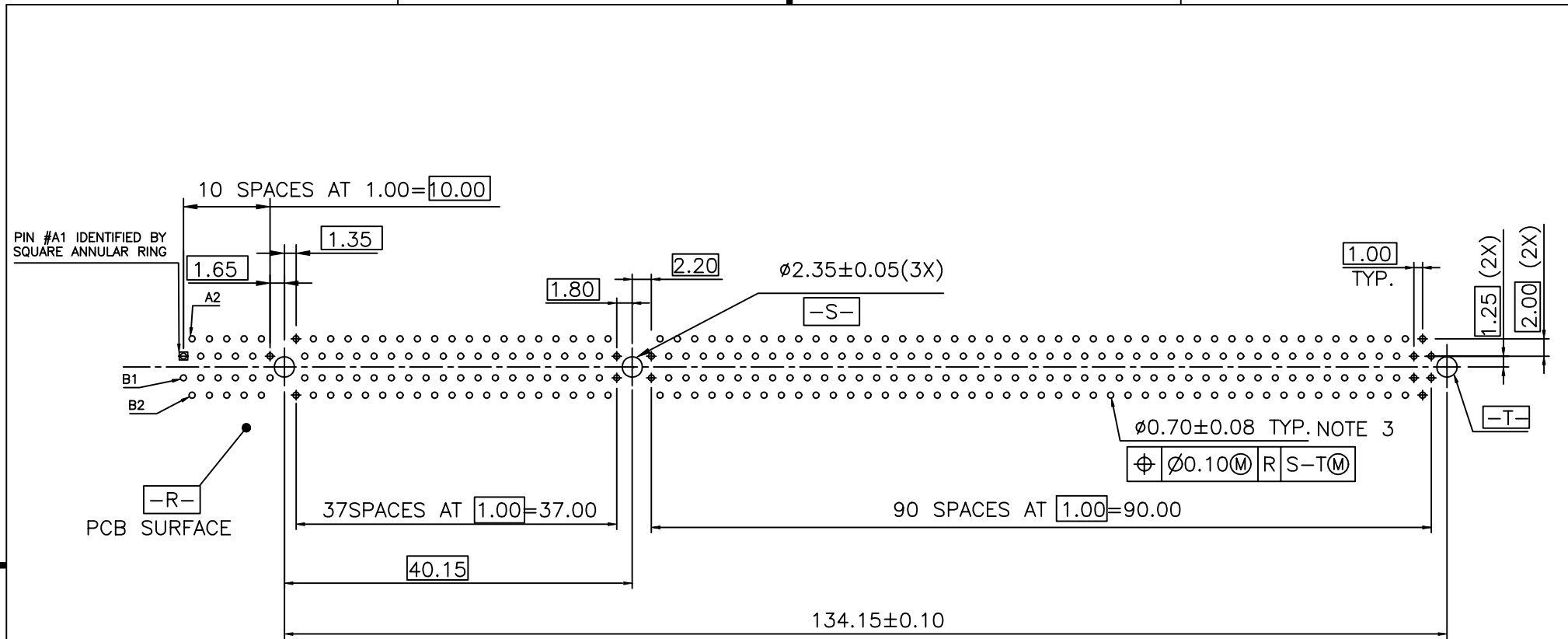


CONFIDENTIAL

mat'l. code				tolerances unless otherwise specified				CUSTOMER COPY		 www.fciconnect.com	
ltr	ecn no	dr	date	linear	.X ± 0.30		projection	title			
A	T04-0383	M W	10/06/04		.XX ± 0.20		 MM	PCI EXPRESS SUPER SLOT			
B	T05-0012	M W	01/13/05		.XXX ± 0.10			CARD EDGE 280P ASS'Y			
C	T05-0210	M W	09/15/05	angles	0° ± 2°		scale	product family	EDGE CARD	code	
				dr	MAGGIE WU	01/30/04	2:1	size	dwg no	TWN	
				engr	R Y LIU	01/30/04		A4	10037901	sheet	
				chr	PAUL WANG	01/30/04		1 of 4			
				appd	J. HSIA	01/30/04					
sheet index	revision sheet	C	A	A	C						
		1	2	3	4						

Tous droits strictement réservés. Reproduction ou communication a des tiers interdite sous quelque forme que ce soit sans autorisation écrite du propriétaire. Propriété de c FCI. Droits de reproduction FCI.

All rights strictly reserved. Reproduction or issue to third parties in any form whatever is not permitted without written authority from the proprietor. Property of FCI. Copyright FCI.



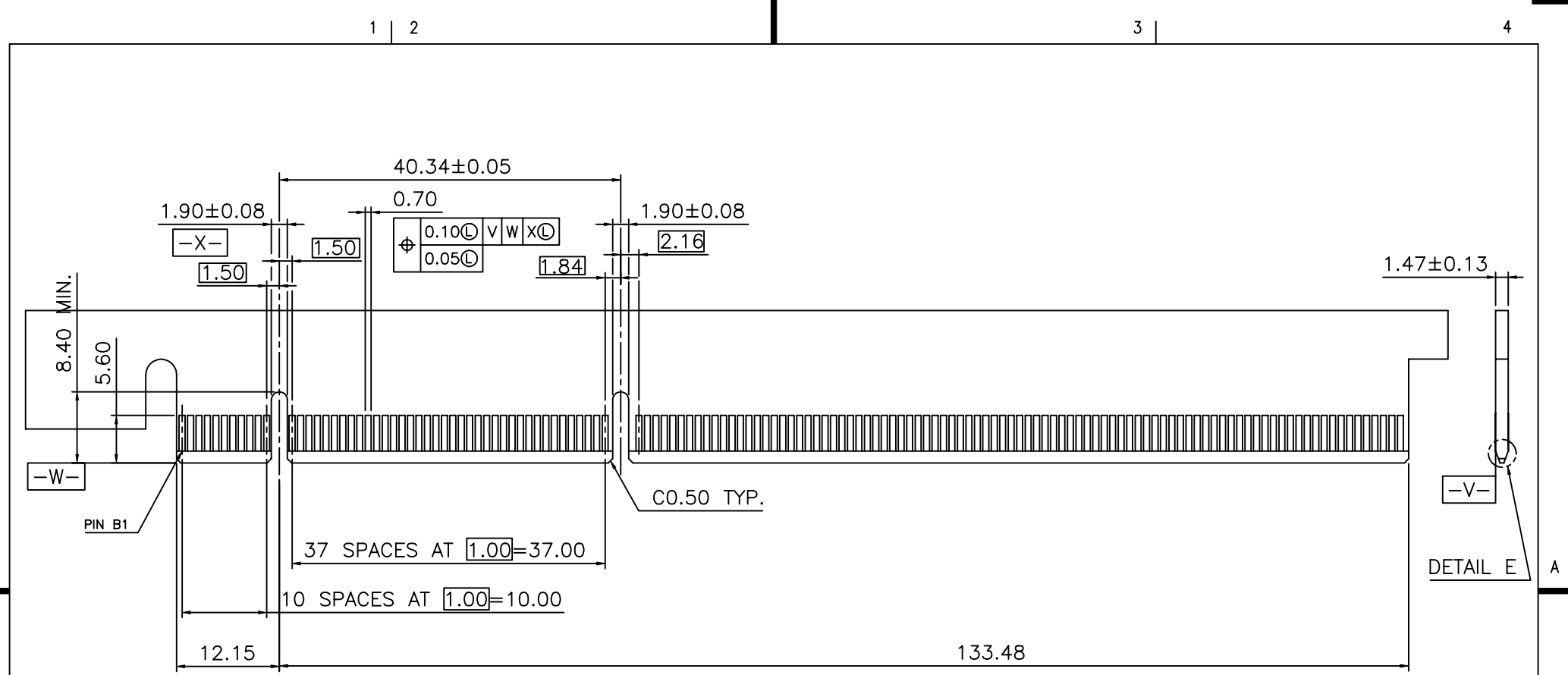
MOTHER BOARD FOOTPRINT PATTERN
CONNECTOR SIDE SHOWN

CONFIDENTIAL

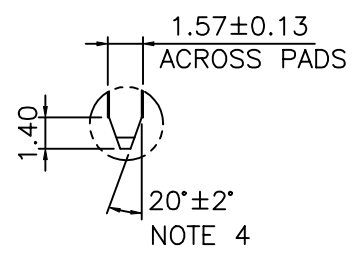
mat'l. code				tolerances unless otherwise specified		CUSTOMER COPY		 www.fciconnect.com	
ltr	ecn no	dr	date	linear	.X ±	projection	title		
A					.XX ±		 MM	PCI EXPRESS SUPER SLOT CARD EDGE 280P ASS'Y	
				angles	.XXX ±			product family	EDGE CARD
				dr	0° ±2°		size	dwg no	TWN
				engr		scale	A4		sheet
				chr	MAGGIE WU 01/30/04		1.5:1	10037901	
				appd	R Y LIU 01/30/04				
					PAUL WANG 01/30/04				
					J. HSIA 01/30/04				
sheet index	revision sheet								

Tous droits strictement reserves. Reproduction ou communication a des tiers interdite sous quelque forme que ce soit sans autorisation ecrite du proprietaire. Propriete de c FCI. Droits de reproduction FCI.

All rights strictly reserved. Reproduction or issue to third parties in any form whatever is not permitted without written authority from the proprietor. Property of FCI. Copyright FCI.



DAUGHTER CARD
PRIMARY (COMPONENT) SIDE



SCALE 2:1
DETAIL E

CONFIDENTIAL

mat'l. code				tolerances unless otherwise specified		CUSTOMER COPY		 www.fciconnect.com	
ltr	ecn no	dr	date	linear	.X ±	projection	title		
A					.XX ±		 MM	PCI EXPRESS SUPER SLOT CARD EDGE 280P ASS'Y	
				angles	.XXX ±	scale		product family	EDGE CARD
				dr	0° ±2°		1.5:1	size	dwg no
				engr		A4		10037901	
				chr	MAGGIE WU 01/30/04				
				appd	R Y LIU 01/30/04				
					PAUL WANG 01/30/04				
					J. HSIA 01/30/04				
sheet index	revision sheet								

NOTES:

1.MATERIAL:

HOUSING: HIGH TEMPERATURE NYLON, GLASS FILLED UL94V-0 RATED. SUITABLE FOR IR REFLOW.

TERMINAL: COPPER ALLOY

PLATING: 50u" NICKEL UNDERPLATE ALL OVER CONTACT AREA PLATING - SEE PRODUCT NUMBER CODE SOLDER TAIL: TIN OR TIN/LEAD (90/10) - SEE PRODUCT NUMBER CODE 100u" MIN. OVER 50u" NICKEL

METAL BOARD LOCKS: COPPER ALLOY

FINISH: 100u" TIN OR TIN/LEAD (90/10) OVER 50u" NICKEL UNDERPLATE SEE PRODUCT NUMBER CODE

2.PRODUCT SPECIFICATION: GS-12-233

③THE HORIZONTAL AXIS FOR THE HOLE PATTERN IS ESTABLISHED BY A LINE THROUGH THE CENTER OF THE TWO Ø2.35 HOLES. THE VERTICAL AXIS IS 90° TO THE HORIZONTAL AXIS, THROUGH THE CENTER OF DATUM Z.

④CHAMFER EDGES MUST BE FREE OF CUTTING BURRS.

5.RoHS COMPATIBLE PRODUCT SPECIFICATIONS

a - PLATING:

- "LF" MEANS THE PRODUCT IS LEAD-FREE, 2um MINIMUM MATTE TIN OVER 1.27um MINIMUM NICKEL UNDERPLATE.

b - MANUFACTURING PROCESS COMPATIBILITY

- THE HOUSING WILL WITHSTAND EXPOSURE TO 260°C±5°C SOLDER BATH TEMPERATURE FOR 5 SECONDS IN A REFLOW SOLDER APPLICATION WITH A 1.6mm MIN THICK CIRCUIT BOARD.

PRODUCT NUMBER CODE

10037901 -x x x x x □ □

HOUSING COLOR OPTIONS

1-BLACK

PEGS OPTIONS

1-METAL BOARD LOCKS

TERMINAL PLATING OPTIONS

- 0-50u" Ni UNDERPLATE 30u" Au CONTACT AREA 100u" TIN TAIL AREA ----- COMPATIBLE RoHS
1-50u" Ni UNDERPLATE 15u" Au CONTACT AREA 100u" TIN TAIL AREA ----- COMPATIBLE RoHS
2-50u" Ni UNDERPLATE GOLD FLASH CONTACT AREA 100u" TIN TAIL AREA ----- COMPATIBLE RoHS
3-50u" Ni UNDERPLATE 30u" Au CONTACT AREA 100u" TIN/LEAD TAIL AREA ----- INCOMPLIANT RoHS
4-50u" Ni UNDERPLATE 15u" Au CONTACT AREA 100u" TIN/LEAD TAIL AREA ----- INCOMPLIANT RoHS
5-50u" Ni UNDERPLATE GOLD FLASH CONTACT AREA 100u" TIN/LEAD TAIL AREA ----- INCOMPLIANT RoHS

LATCHING OPTIONS 0-WITHOUT LATCHING

PACKAGING OPTIONS T-TRAY PACKAGING

LEAD FREE OPTION

LEAVE BLANK FOR TERMINAL PLATING 3,4,5 "LF" FOR TERMINAL PLATING OPTION 0,1,2

TAIL LENGTH OPTIONS

Table with 4 columns: DIM "D", PCB THICKNESS, BOARD LOCKS DIM "G". Rows 0, 1, 2.

CONFIDENTIAL

Customer Copy table with columns: mat'l. code, tolerances, CUSTOMER COPY, title, product family, code, size, dwg no, sheet.

Tous droits strictement reserves. Reproduction ou communication a des tiers interdite sous quelque forme que ce soit sans autorisation ecrite du proprietaire. Property of FCI. Copyright FCI.